

Request for Quotes
Greenway Cemetery Mausoleum Repair
Due September 15, 2023, 4:00 pm
Town of Bath Municipal Building

The Town of Bath Cemetery Management & Maintenance, Inc. is seeking contractor quotes to perform exterior repairs to the mausoleum located in the Greenway Cemetery.

The attached Request for Quote (RFQ) outlines the repair requirements and suggests repair procedures, including a product and process for the required repairs. Your quote should be based on the use of these procedures and products. Substitute methods and material will be considered, however, the methods and materials should be explained in detail with the quote. Use of substitute methods or materials requires the approval the the Town of Bath and its Engineer.

The mausoleum is located in Berkeley Springs, WV on Greenway Trail, midway between Greenway Drive and Johnsons Mill Road. Perspective bidders are encouraged to visit the site on their own before submitting a quote.

The RFQ provides the information on Contractor Requirements, Required Content of your Quote, the Basis for Award, and information on the preferred material.

The Town of Bath Council reserves the right to reject any and all bids. Minority/Women owned businesses are encouraged to submit bids.

Your quote and other required contents should be e-mailed to townofbath@wvdsl.net
with the Subject: RFQ Cemetery
no later than 4 PM on September 15, 2023.

Contact Sharron Corrick, Town of Bath Clerk, for more information: 304-258-1102.

Request for Quote
Exterior Repairs to the Mausoleum in Greenway Cemetery
Town of Bath, WV

General Requirements

The Town of Bath Cemetery Management & Maintenance Incorporated (TBCMMI) (the Owner) located in the Town of Bath, West Virginia is seeking contractor quotes to perform exterior repairs to the mausoleum located in the Greenway Cemetery. The components of the Mausoleum are identified on page 4. The repairs will consist of:

1. Cleaning, staining and sealing of the upper face of the existing concrete vault. (The previous separate façade concrete blocks have been removed and will not be replaced).
2. In-place fabrication of two new concrete end pillars to be secured to the ends of the existing concrete vault.
3. Cleaning of some or all of the 42 marble doors, most likely the 14 doors on the bottom level.
4. In-place repair, staining and sealing of the attached concrete matrix that frames the 42 doors on the front side of the mausoleum.
5. Sealing of the door edges.
6. Power wash cleaning and sealing of the two wing walls and bottom slab.

Cleaning, Repair and Sealing Processes and Products

Details of the suggested cleaning, repair, and sealing processes and products are provided below and in the attachments. Your quote should include identification of any different cleaning, repair, concrete form and rebar configuration and sealing processes and products that you intend to use. These will be reviewed and accepted or changed as necessary by the Owner and the Owner's Engineer.

1. Upper Concrete Façade:
 - a. Protect the main face of the mausoleum, matrix and doors
 - b. Remove existing/loose mortar, etc on the front-facing vertical and horizontal surfaces of the main vault concrete
 - c. Pressure wash surface up to 1450 psi as needed
 - d. Prepare surface and stain with H&C COLORTOP Solvent-Based Solid Color Concrete Sealer (or equal product to be approved by the Owner and Engineer) with the color to be defined by the Owner
 - e. Seal with the stain product in (d) or with a separate sealer as approved by the Owner and Engineer
2. Fabrication (on-site) of two new concrete end pillars:
 - a. Concrete is to be 4K psi, Class K
 - b. Rebar to be four #4 (verticals) and #3 horizontal cross ties every 18 inches down to base (See Attachment A sketch)
 - c. New footings to be a part of the pillar
 - d. Single pour
 - e. Use forms to shape top of pillars
 - f. Rear sides of pillar are formed by existing wing walls (clean area as needed)
 - g. Anchor pillar to the main vault vertical side wall in three places with #4 rebar that is connected to the #4 internal rebar of the pillar. Use epoxy in the anchors to the vault side
 - h. Stain with same product & color as in #1 above
 - i. Seal with same product as in #1 above

3. Marble Doors: (Your quote should be for the baseline work for the lower 14 doors)
 - a. Use neutral pH detergents and marble-specific cleaning products in conjunction with mechanical agitation and clear water rinse
 - b. Apply impregnating clear sealer to reduced potential future staining

4. Concrete Matrix:
 - a. Repair product recommended is SikaQuickR-VOH or an equivalent fast-setting one component cementitious repair mortar. Any different mortar will require approval by the Owner and Engineer.
 - b. Follow all surface preparation, mixing and cleaning instructions from the manufacturer. Additional information for SikaQuickR-VOH is available upon request. Since there is visible and corroded rebar in the matrix, particular attention to Surface Preparation procedures must be made.

 - c. Grind out cracks and deep crevices and fill with SikaQuickR-VOH to be flush with existing matrix surface
 - d. Prepare treated areas to be as close as possible to the existing surface finish
 - e. Note: because the marble doors are inserts within the matrix, the beveled sides of the matrix cannot be made thicker by using the SikaQuickR-VOH treatment.
 - f. Apply skim coat to outer face of Matrix where necessary. Follow product instructions relative to minimum and maximum coat thickness
 - g. Stain with the same product as approved for #1 above, however the color selected by the Owner and Engineer may not be the same as in #1 and #2 above
 - h. Seal with same product as in #1 above

5. Sealing of the door edges:
 - a. After the repair of the matrix is complete and stained and sealed, clean all the areas and apply a clear silicon caulking to the door edges in all 42 door areas.
 - b. Make sure the door cleaning in Item 3 above is complete.
6. Power wash cleaning and sealing:
 - a. Power wash and seal the bottom slab
 - b. Inspect wing walls to determine if power washing is appropriate

Notes for this Work Statement:

- a) The order in which the work is to be done (above) is based on working from the top down on the Mausoleum to avoid damaging a completed portion by working on something above it. This order can be changed in discussion with the selected Contractor.
- b) There is no electrical power, fresh water source or secure storage at or near the Mausoleum. The Contractor should provide any needed electrical power and secured storage. There will be a lay-down area identified that will be adjacent to the Mausoleum. The face of the Mausoleum is accessible for Contractor's pick-up sized vehicles. Access for concrete pouring for the two pillars will be discussed prior to the start of work.
- c) The contractor is responsible for any staging needed for access and worker safety.
- d) The Contractor is responsible for any required weather protection during the setting, drying or curing phases of the repairs
- e) The Contractor is responsible for clean-up and removal of wasted and products associated with the repairs.

- f) The mausoleum in its current condition may be viewed in the Greenway Cemetery in the Town of Bath, WV at GPS Coordinates: North 39.617878 Deg and West 78.227250 Deg.

Electronic copies of this Request for Quote can be obtained by e-mailing the Bath Town Clerk at: Town Bath townofbath@wvdsi.net

Contractor Requirements:

Provide 3 recent references the Town of Bath can contact including Name, Phone, and project cost with beginning and end dates.

The selected contractor must carry the following insurance for the entire period of this job order, and must name Town of Bath 271 Wilkes Street, Berkeley Springs, WV as an additional insured:

1. WV Workers Compensation (State Minimum)
2. General Liability or similar comprehensive insurance policy with a minimum of \$1,000,000 per incident coverage.

Must be an Equal Opportunity Employer as defined by federal and State Law.

The Contractor must hold Contractors' and Business Licenses as required by the Town of Bath and the State of West Virginia Statutes and Laws.

Required Contents of your Quote

The contractor shall submit their quote that must include the following:

1. Name and address of your company and any subcontractors to be included in the work
 - a. Names of the principal employees who will be doing the work including the leader to be assigned
 - b. Include the 3 examples of experience on similar projects mentioned above. Include contact information of the businesses or municipalities for which the project was completed.
2. Details of processes and products that are different from the ones identified above and that the contractor seeks approval to use on this project.
3. An estimated timeframe required to accomplish the work.
4. Contractor's price for the work.

Submit your quote and the information required above electronically to the Town Clerk with the Subject Line: "RFQ Cemetery" to townofbath@wvdsi.net

You can also mail three (3) copies of your quote to:

Town of Bath
271 Wilkes Street
Berkeley Springs, WV 25411
Attn: Mausoleum Repairs

Basis for the Award:

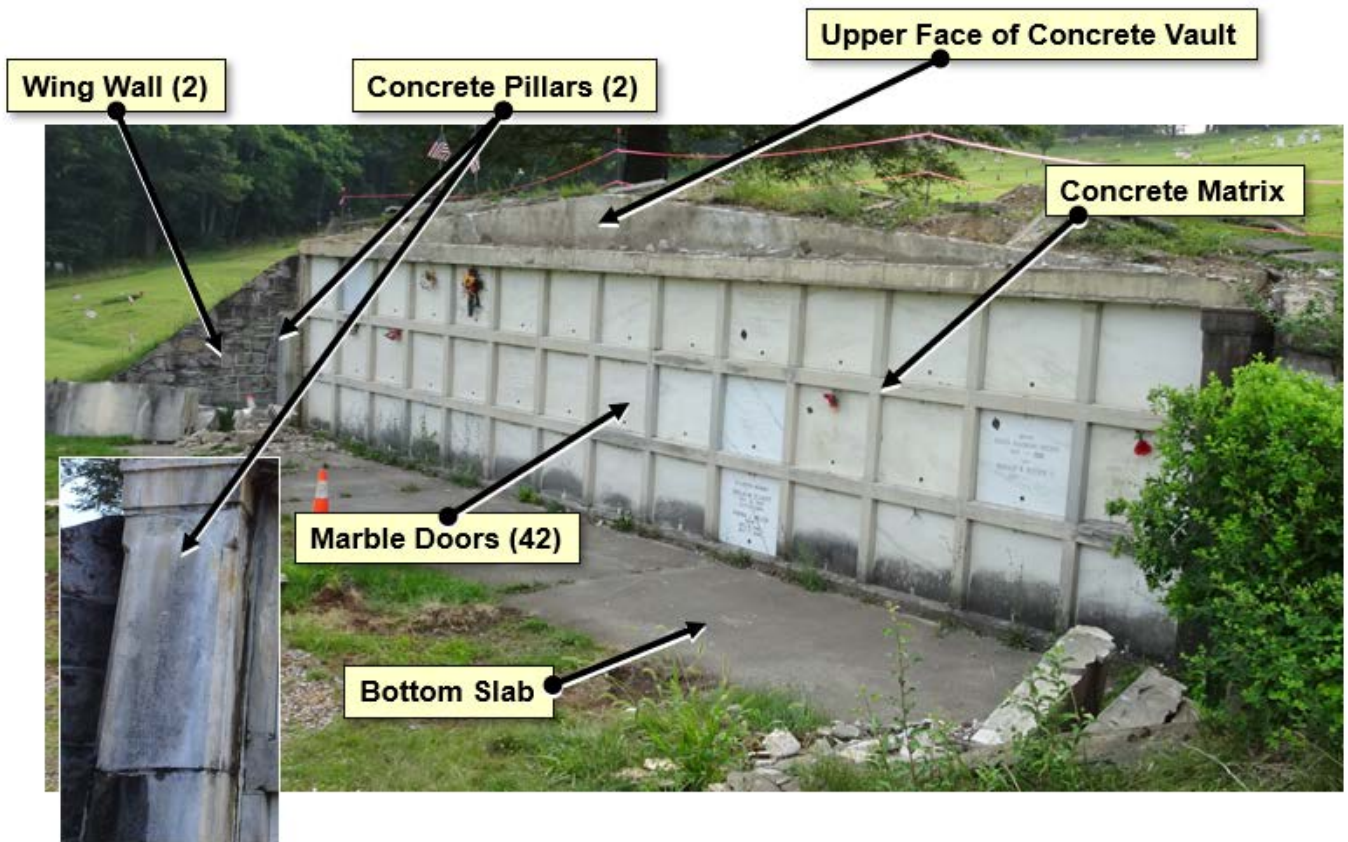
This work order will be awarded to the best qualified offeror based on the scoring criteria below. Qualifications are based on your submittal of the 3 examples of experience on similar projects mentioned above.

The Town of Bath Cemetery Management & Maintenance Incorporated reserves the right to reject any and all quotes.

Submissions will be scored on the following:

Item	Possible Points
Total Bid Quote	1-30
Qualifications, Knowledge of Products and Processes to be used on the Mausoleum	1-10
Experience	1-10
References	1-10

Mausoleum Components



SIKAQUICK® VOH

VERTICAL AND OVERHEAD REPAIR MORTAR

APPLICATIONS

- Fast repairs to overhead and vertical concrete and mortar surfaces on grade, above and below grade.
- Repair material for building facades, parking structures, industrial plants, bridges, etc.
- Fast setting repair material for new construction defects

TYPICAL DATA

- Shelf Life: One year in original, unopened bags
- Storage Conditions: Store dry at 40°-95°F (4°-35°C)
- Product Conditioning: Condition material to 65°-75°F before using.
- Color: Concrete gray
- Mixing Ratio: 6 - 6.5 pints/unit
- Density (Wet mix): ~ 125 lbs. / cu. ft.
- Application Time: Approximately 20 minutes.
- Finishing Time: 20-30 minutes
- Lift Height: Max: 3" Min: 1/8"
- Time Between Lifts: After final set

BENEFITS

- Minimal time required between lifts.
- Fast finishing time
- Available as low dust version
- Time/labor-saving material; application up to 3 inches on vertical surfaces in one layer
- Easy to use; just add water
- High bond strength ensures excellent adhesion
- High early and ultimate strength
- Increased freeze/thaw durability and resistance to deicing salts
- Suitable for exterior and interior applications
- Not a vapor barrier
- Overhead thickness up to 2"
- Fiber reinforced and polymer modified
- Contains corrosion inhibitor

LITERATURE

- Product Data Sheet
- Material Safety Data Sheet

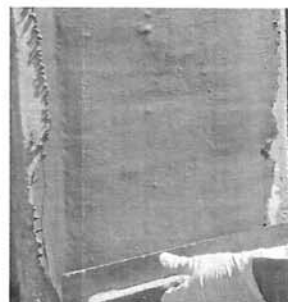
*Always refer to Current Product Data Sheet and MSDS for detailed performance specifications prior to use.



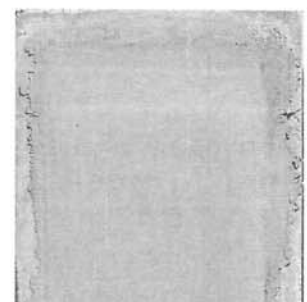
Mix to uniform consistency, no longer than 3 minutes



Moist cure and protect from elements immediately after finishing.



Scrub material into substrate, filling any pores and voids.



Finish with trowel, float, or sponge, depending on desired surface texture.

Note: Advice on specific applications is available from the Technical Service Department of Sika Construction Products Division.

FOR MORE INFORMATION:

Contact Sika: Phone 800.933.SIKA(7452) Website: usa.sika.com

Sika Corporation

201 Polito Avenue
Lyndhurst, NJ 07071
Phone: 201-933-8800
Fax: 201-933-6225

© Sika Corporation/Retubishment/05.1303.2/17/2018

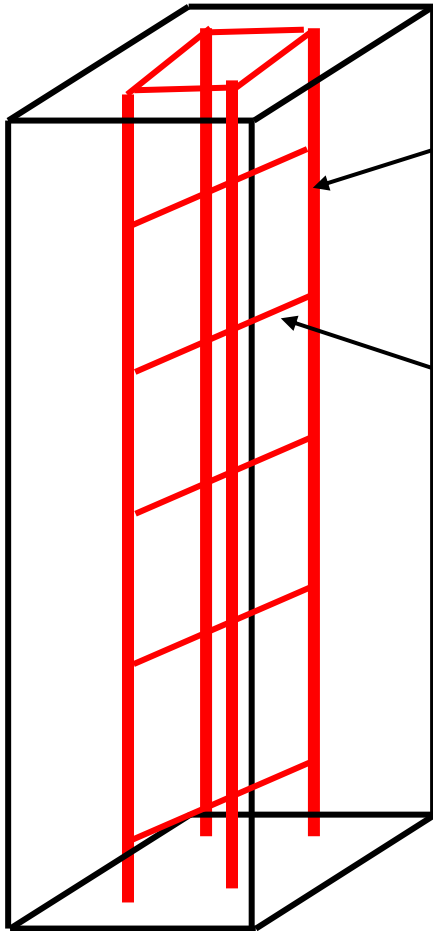
BUILDING TRUST



Mausoleum Pillars - Typical Fabrication Sketch

Final Version to be Approved by Owner & Engineer

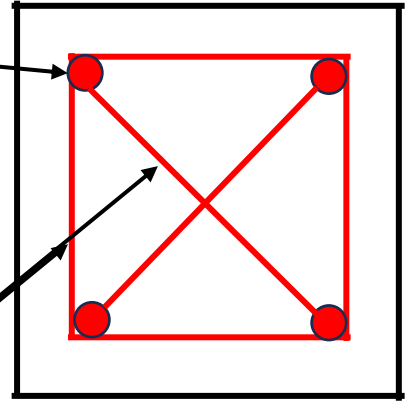
New End Pillar
Class K Concrete; 4K psi;
Single Pour



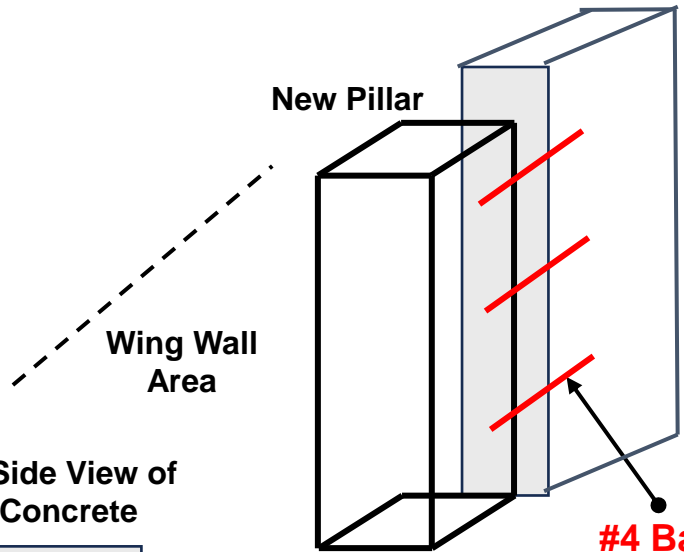
#4 Bar

#3 Tie Bar
at 18 inch
spacing

**New End Pillar
Top View**



**Forward Section Edge of
Left Side Vault Concrete**

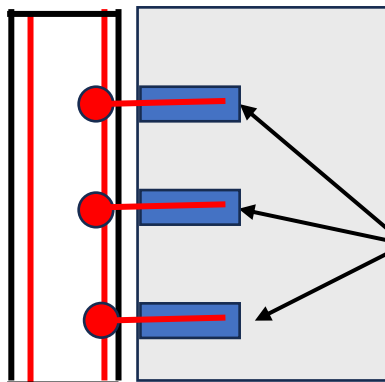


New Pillar

Wing Wall
Area

#4 Bar

**Forward Section Side View of
Left Side Vault Concrete**



Epoxy
Anchors
6 inch
Embedment