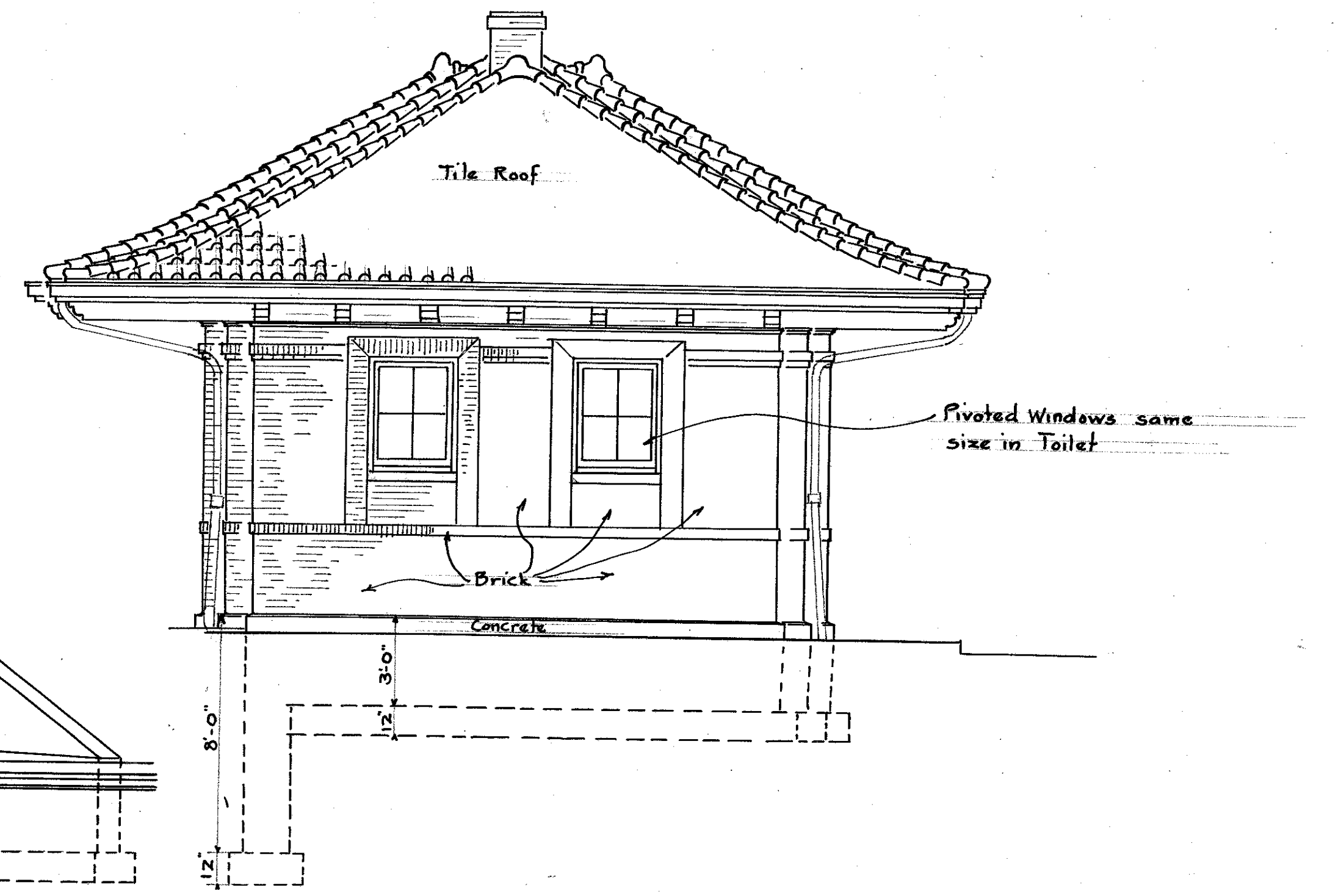
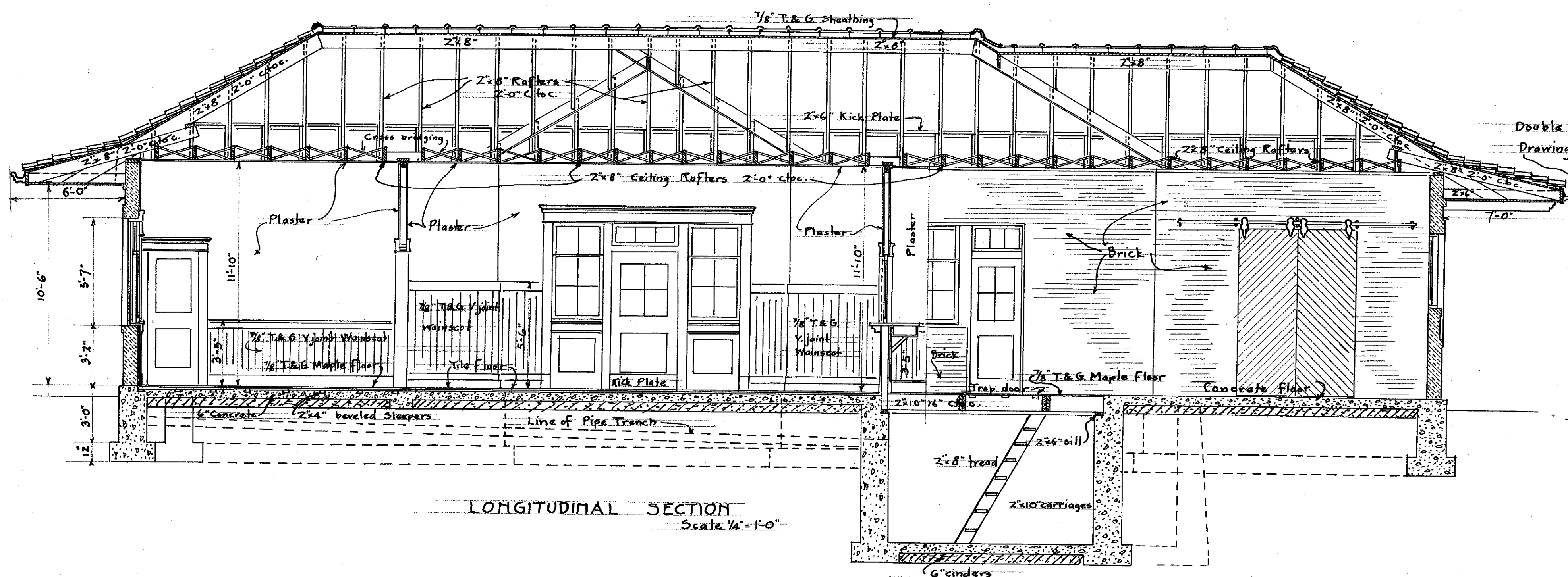


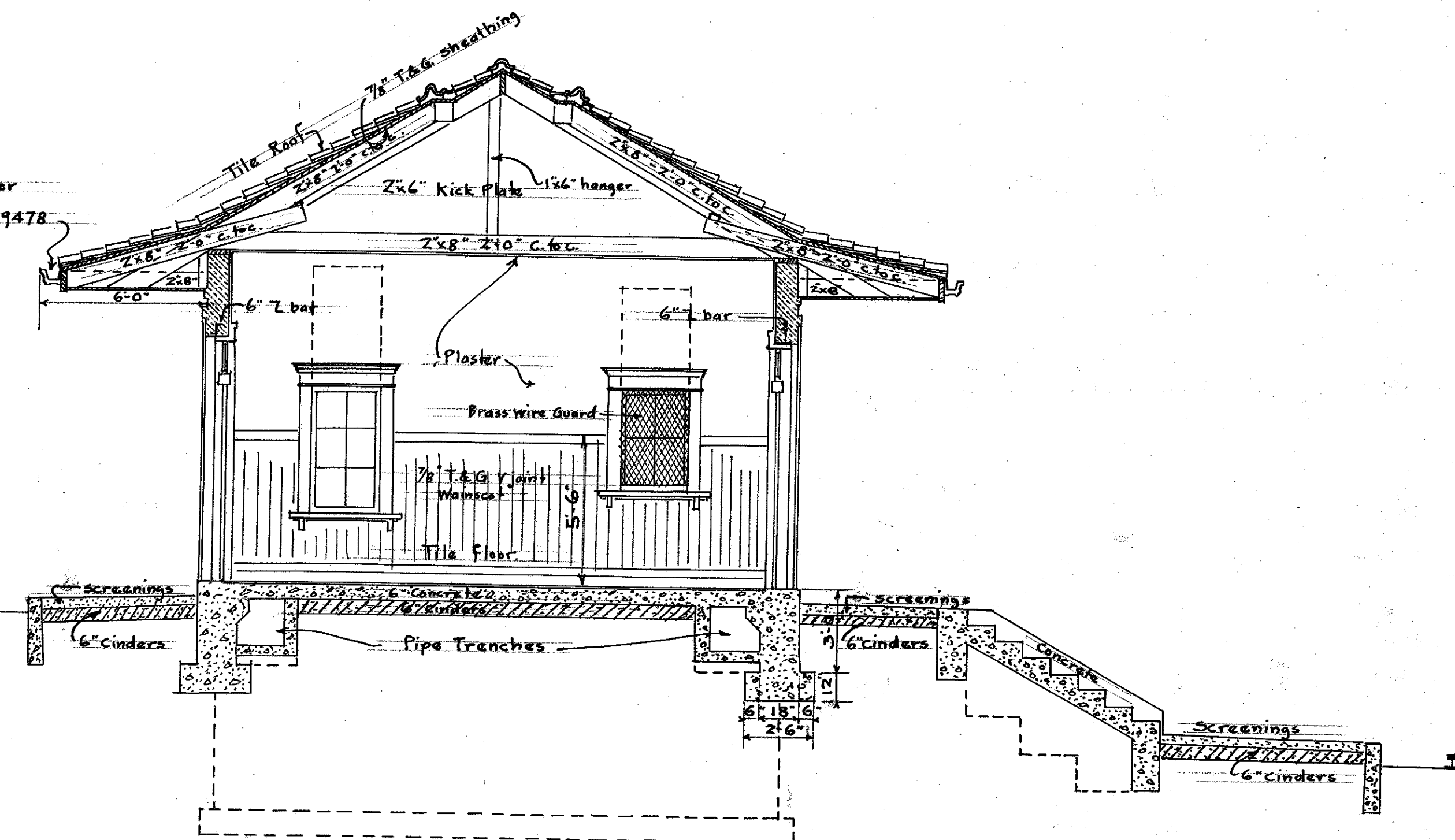
FRONT ELEVATION EAST
Scale 1/4"=1'-0"



END ELEVATION NORTH
Scale 1/4"=1'-0"



LONGITUDINAL SECTION
Scale 1/4"=1'-0"



CROSS SECTION
Scale 1/4"=1'-0"

Revised: June 19, 1914
for completion

THE BALTIMORE AND OHIO SYSTEM
THE BALTIMORE AND OHIO RAILROAD COMPANY
CUMBERLAND DIV. BERKELEY SPRINGS, WVA.
PROPOSED PASSENGER STATION
ELEVATIONS AND SECTIONS

Scale 1/4"=1'-0" June 18, 1914

Office of Architect
Baltimore, Md.

Chief Engr.

Arthur
Architect

File 90-1 Drawing No. 10319